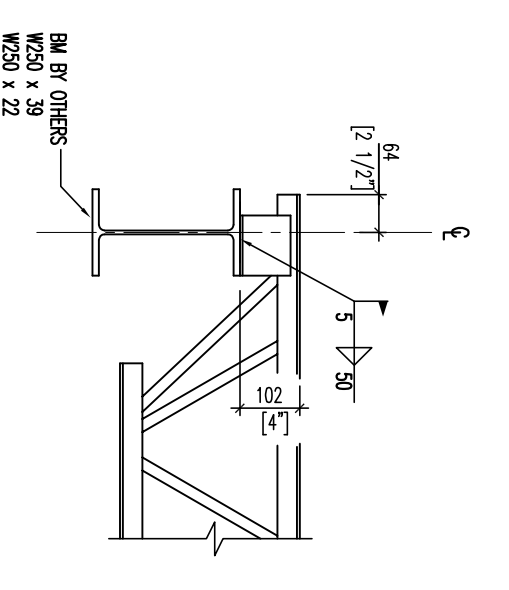
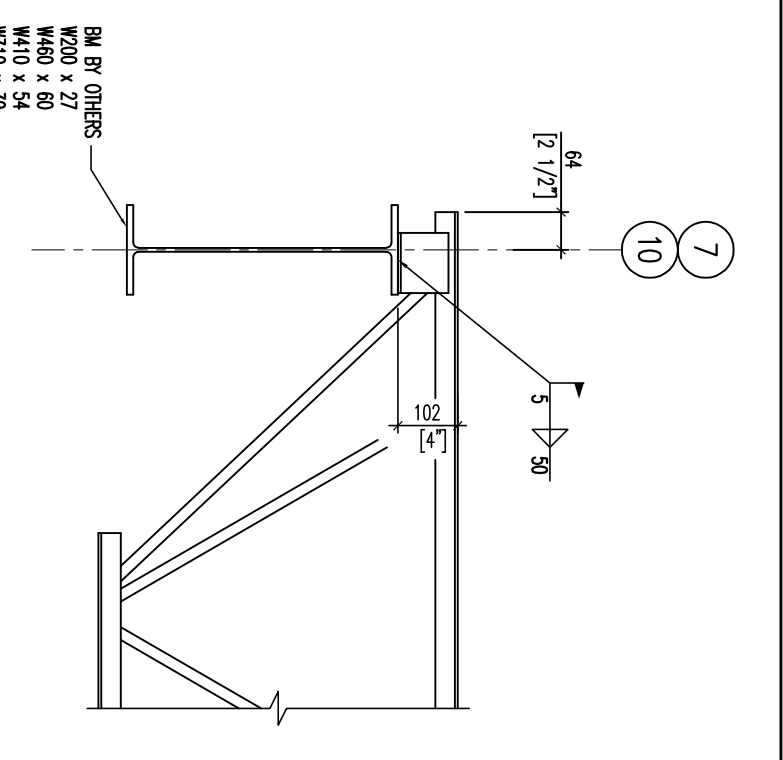


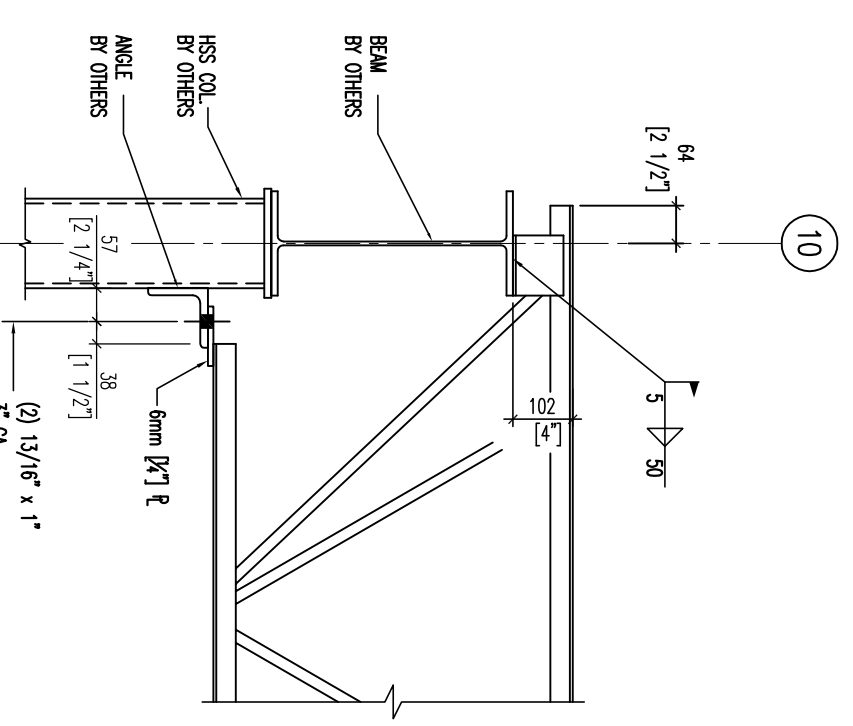
SECTION 18
N.T.S.



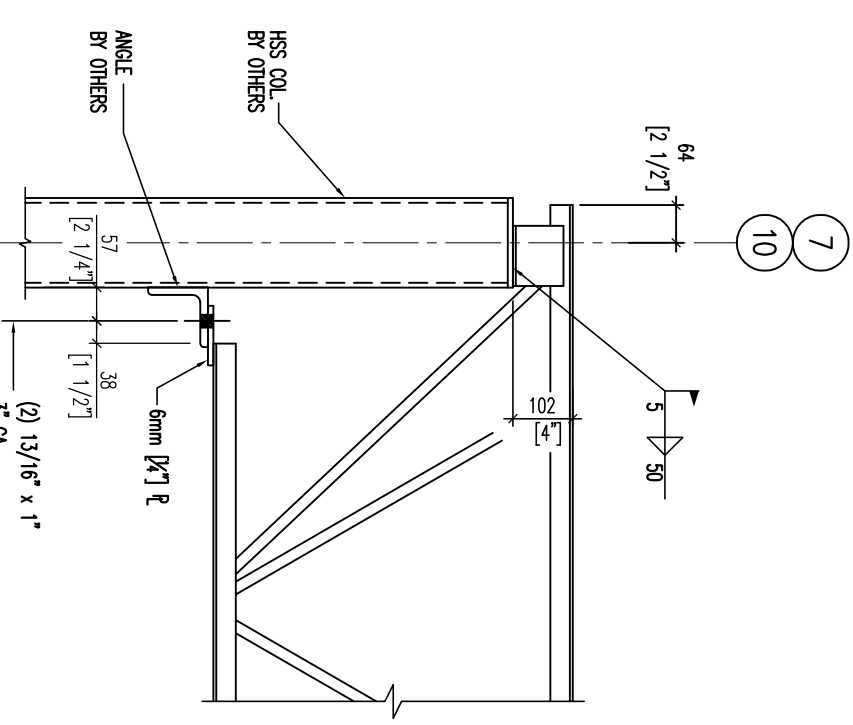
SECTION 19
N.T.S.



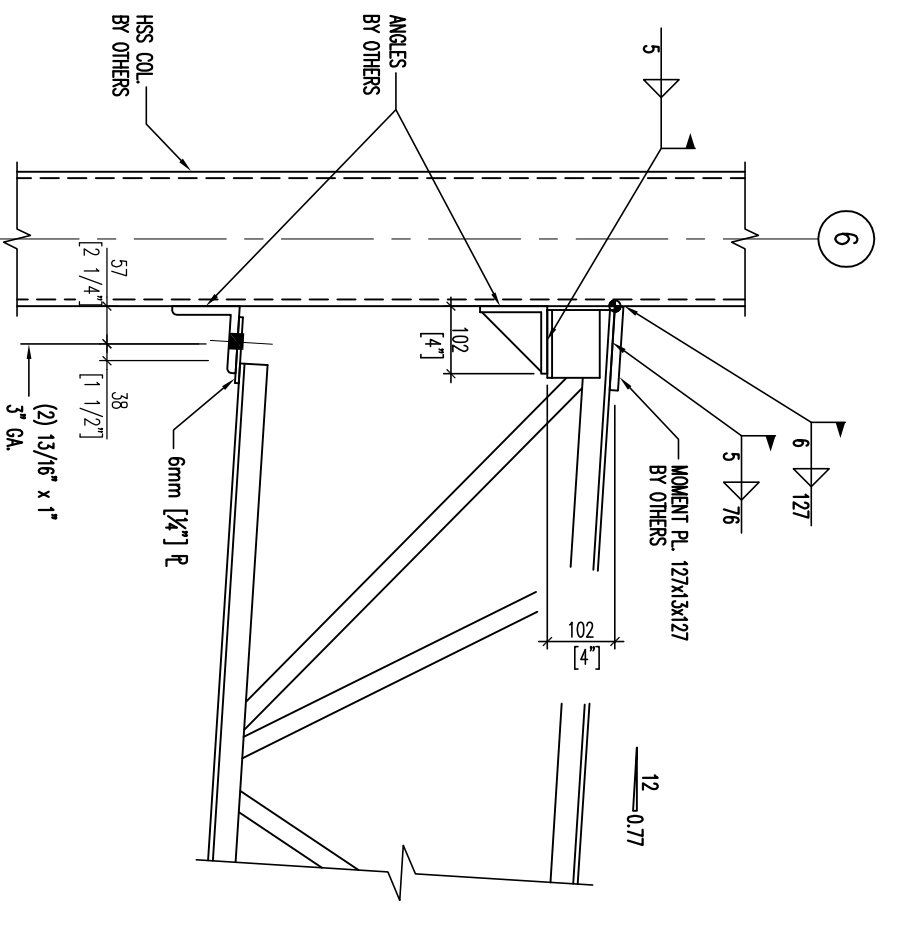
SECTION 20
N.T.S.



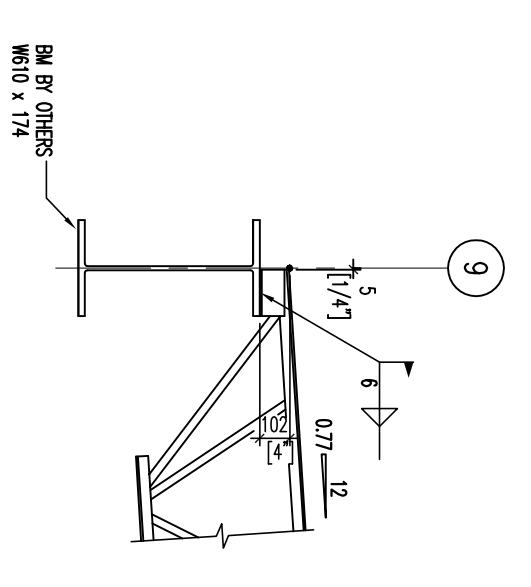
SECTION 21
N.T.S.



SECTION 22
N.T.S.

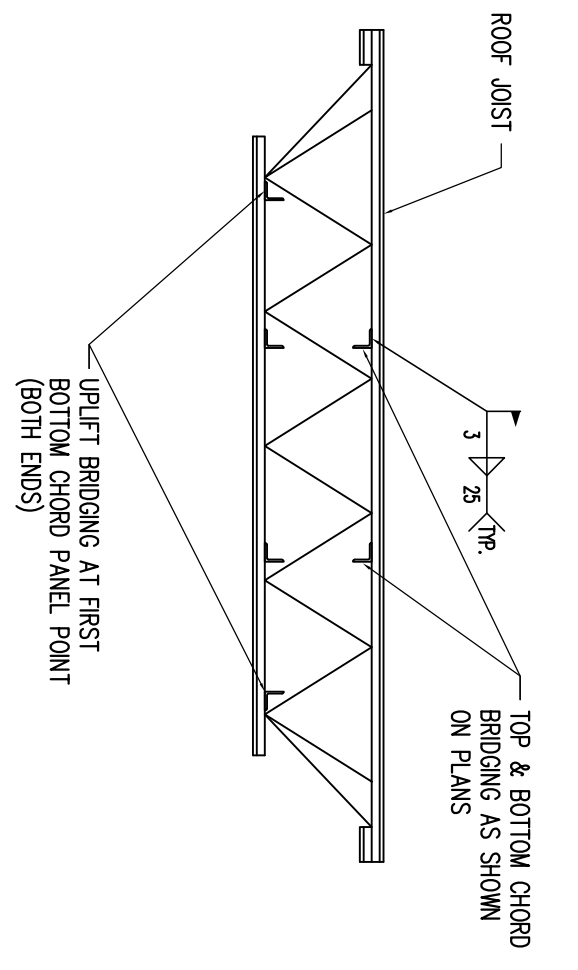


SECTION 23
N.T.S.



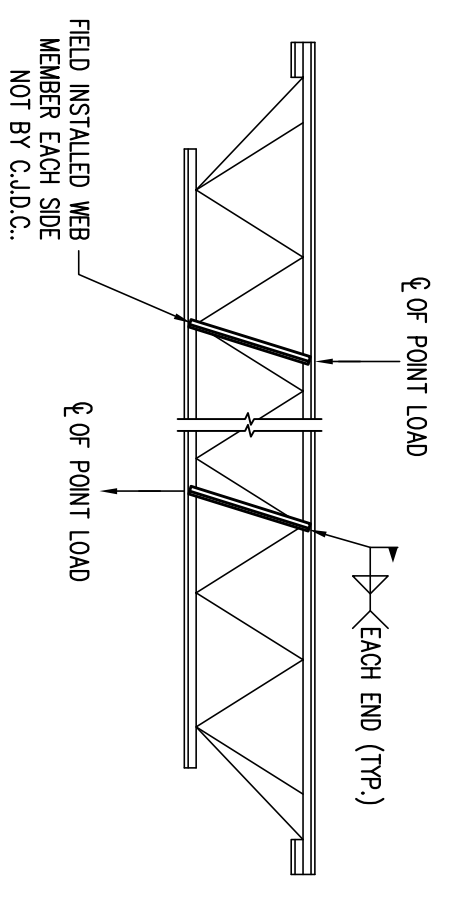
SECTION 24
N.T.S.

NOTE:
PLEASE VERIFY ALL
EDGE OF STEEL DIMS.



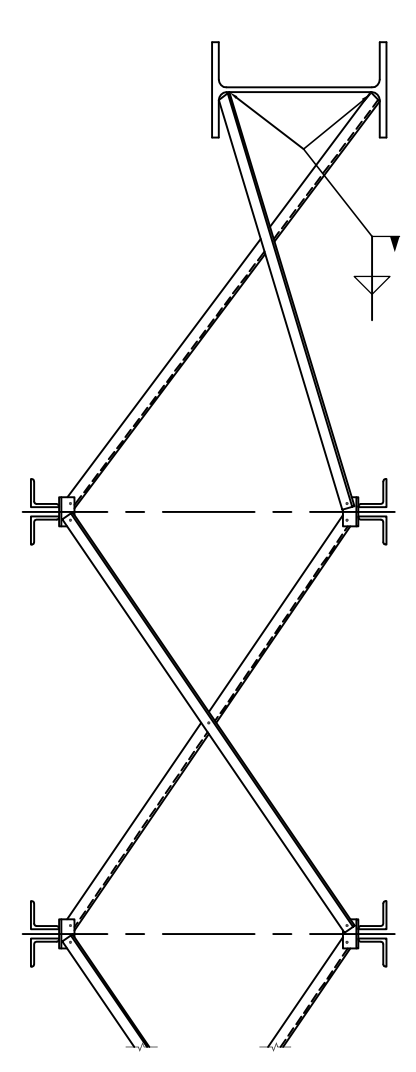
TYPICAL ROOF JOIST UPLIFT BRIDGING DETAIL

SEE TYPICAL BRIDGING DETAILS FOR ADDITIONAL INFORMATION.

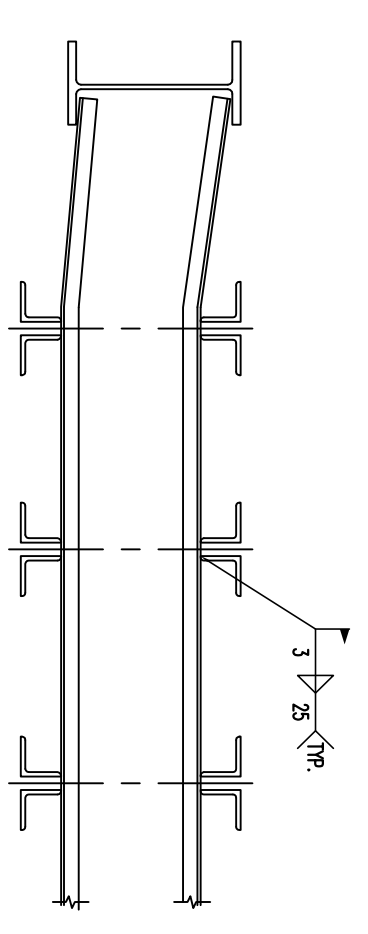


EXTRA VERTICALS AT CONCENTRATED LOADS

ALL JOISTS ARE NOT DESIGNED FOR LOCALIZED BENDING FROM POINT LOADS. POINT LOADS NOT SHOWN ON THE JOIST PLANS MUST BE APPLIED AS JOIST PANEL POINTS OR FIELD INSTALLED WEB MEMBERS MUST BE UTILIZED AS SHOWN AT NO COST TO C.A.D.C. EXTRA VERTICALS ARE M.I.N.C. CONSULT THE PROJECT STRUCTURAL ENGINEER OF RECORD FOR SIZING AND WELDING REQUIREMENTS OF THESE EXTRA WEB MEMBERS.



TYPICAL BOLTED DIAGONAL BRIDGING TERMINATING @ BEAM



TYPICAL WELDED HORIZONTAL BRIDGING TERMINATING @ BEAM

1. FIELD WELD AT ALL CONTACT POINTS (INCLUDING ALL LAPS).
2. ALL HORIZONTAL BRIDGING SHALL HAVE A STANDARD 3" (76 mm) LAP.

For Approval Only
NOT FOR CONSTRUCTION

JOB NAME	BARRHAVEN FIRE STATION NO. 47		
LOCATION	OTTAWA, ON		
ARCHITECT NAME	ENGINEER NAME	HALSALL	
CUSTOMER	BLACK ANVIL IRON WORKS		
CUSTOMER P.O. NUMBER	NMBS JOB. NUMBER	DTLR.	CHKR.
	8010-0704	S.A.L.	C.P./R



2510 Ouellette
Suite L01
Windsor, Ontario
N8X 1L4
Phone: (519) 962-9637
Fax: (519) 962-9633
www.canadianjoist.ca
drafting@canadianjoist.ca

REV No	DATE	DESCRIPTION
0	11/19/10	ISSUED FOR APPROVAL